



# TOWN CRIER

Telephone: 01582 708540

E-mail: [info@houghtonregis.org.uk](mailto:info@houghtonregis.org.uk)

Web: [www.houghtonregis.org.uk](http://www.houghtonregis.org.uk)

Delivered to all properties in Houghton Regis

## Christmas 2016

We are kicking off three weeks of Christmas celebrations starting with:

### Celebration of Christmas

Tuesday 22<sup>nd</sup> November at 6pm

The Grove Theatre, Dunstable

Be part of our '*Celebration of Christmas*' with festive songs old and new from seven Houghton Regis primary schools plus performances from special guests.

Tickets are available from The Grove Theatre Box Office 01582 602080.

### Christmas Carol Service

Saturday 3<sup>rd</sup> December at 5pm

All Saints' Parish Church

The Town Mayor's Carol Service will be taking place at All Saints' Parish Church.

This will be followed by the switching on of the Christmas Tree lights in Bedford Square, plus light refreshments courtesy of the Town Council.

*All are welcome to attend.*

### Santa's Grotto

Saturday 13<sup>th</sup> December from 10am – 12pm

in Houghton Regis Library

Santa and his elves are stopping by again in Houghton Regis Library on Saturday from 10am – 12 noon. Come and say Ho Ho Ho!

**\*A surprise gift for every child\***

Entrance is **free** although there will be a collection in aid of the Town Mayor's Charities.



Find us on 



### MORE INSIDE



Pride of Houghton Awards page 3



Houghton Rocks page 7

### CHRISTMAS OFFICE HOURS

The office will be closed Monday 26<sup>th</sup> & Tuesday 27<sup>th</sup> December.

Office hours 10am - 4pm  
Wednesday 28<sup>th</sup> December,  
Thursday 29<sup>th</sup> December, Friday  
30<sup>th</sup> December

Normal office hours resume  
Tuesday 3<sup>rd</sup> January 2016

*The Mayor, Town Councillors and staff all join in wishing every resident of Houghton Regis a Happy Christmas and a Peaceful New Year.*

For more information on any of our events, please see our website: [www.houghtonregis.org.uk](http://www.houghtonregis.org.uk)



## Houghton Regis Town Council Contact Details

Houghton Regis Town Council  
Peel Street, Houghton Regis  
Bedfordshire LU5 5EY

Telephone: 01582 708540  
Fax: 01582 861102

Email: [info@houghtonregis.org.uk](mailto:info@houghtonregis.org.uk)  
Website: [www.houghtonregis.org.uk](http://www.houghtonregis.org.uk)

 [facebook.com/hrtowncouncil](https://www.facebook.com/hrtowncouncil)

 [pinterest.com/houghtonregistc](https://www.pinterest.com/houghtonregistc)

 [@HRCouncil1](https://twitter.com/HRCouncil1)

 [@HoughtonRegisTC](https://www.instagram.com/HoughtonRegisTC)

### Officers:

Clare Evans Town Clerk	01582 708542
Stuart Oliver Deputy Town Clerk	01582 708543
Debbie Marsh Corporate Services Manager	01582 708540
Sarah Gelsthorp Civic and Events Officer	01582 708523
Sonia Stennett Accounts & Cemetery Officer	01582 708541
Chantel England Promotions and Administration Officer	01582 708544
Robyn Godfrey Office Apprentice	01582 708540

### Councillor contact details:

Houghton Hall Ward:	
Cllr. Laura Ellaway	01582 537 105
Cllr. Robin Hines	01582 759 026
Cllr. Chris Slough	01582 751 881
Cllr. Susan Thorne	07847 702 499
Cllr. Ken Wattingham	01582 705 830

Parkside Ward:	
Cllr. Jimmy Carroll	01582 868 006
Cllr. Don Dixon-Wilkinson	01582 529 554
Cllr. Joanna Hillyard	07748 440 901
Cllr. Martin Kennedy	01582 702 274

Tithe Farm Ward:	
Cllr. David Abbott	01582 894 060
Cllr. Tracey McMahon	07948 532 662
Cllr. Richard Scott	01582 708 540
Cllr. Tony Swain	01582 522 952

Central Bedfordshire Councillors:	
Antonia Ryan (Parkside)	0300 300 8518
Susan Goodchild (Houghton Hall)	0300 300 8525
John Kane (Houghton Hall)	0300 300 8537
Tony Swain (Tithe Farm)	0300 300 8567

## Town Clerk

 Welcome to this festive edition  
of the Town Crier.

Christmas is a very special time for all of us, a time to spend with family and friends, reflect on a year passed and plan for the New Year ahead.

The Town Council has worked hard over 2016 to provide great community events for all to enjoy, to keep residents informed as major plans are shaped and developed for the future of the town, and to see our community grow and flourish.

The great news is that 2016 is still not over... there is an exciting programme of events lined up to help you get into the Christmas spirit before we bid farewell to 2016.

2017 is all set to be another exciting year for Houghton Regis with the annual programme of free community events for you, friends and family to enjoy, Works continue on the major infrastructure projects of the Northern Bypass and the Woodside Link is anticipated to be open late 2016 / early 2017, along with the A5-M1 link which is also due to be completed by the end of June 2017. Details for all the works and events will follow in future editions of the Town Crier and on the Town Council website and Facebook pages.



*I would like to wish all the residents  
of our town a Very Merry Christmas  
and a Peaceful New Year.*

## The Town Mayor

What a great summer wasn't it? I really enjoyed Houghton Rocks – even if we did get a bit wet – and Pride of Houghton was something special. Now we begin to look forward to Christmas and our very own Celebration of Christmas at the Grove Theatre on 22 November. This is a hugely popular event with our local schools and groups contributing performances. The Christmas Lights will be switched on in Bedford Square, following our carol service at All Saints on Saturday 3rd December 2016 and Santa will be in his Grotto on Saturday 10th December. This is not to be missed.



So it's a busy time for Houghton Regis. But let's not forget those who might be alone or in ill-health at this time. And a big thank you in anticipation to all our volunteers, and those working in caring roles over the Christmas period while we enjoy ourselves at home. What would we do without you?

*I would like to wish you all a  
Merry Christmas and a Happy New Year.*

# Pride of Houghton Awards 2016

The annual Pride of Houghton Awards returned this year to celebrate the achievements and success of some truly remarkable residents of the town. The award nominees, local businesses and the Town Mayor were just some of the guests that attended the event held at Houghton Regis Memorial Hall on Saturday 8th October 2016.

The Pride of Houghton Awards was first held in autumn 2003 and has been held annually since then. Each year nominations for the Pride of Houghton Awards are invited from residents during March until August; and the scheme is advertised on fliers, the Town Council website and the Town Crier Newsletter. Chosen by the public, the nominees are often from all walks of life and of all ages, their achievements are remarkable and a lesson to us all.

In preparations for this year's Pride of Houghton awards it was decided that the award ceremony deserved a complete revamp whereby additional categories were added to the award ceremony as well as the introduction of a 'highly commended' award which accompanied the winner in five of the current categories. Rock n Roll bingo hosted by DJ Big Man Craig, a video presentation of previous winners and a quiz were just some of the brand new and exciting additions to this year's Pride of Houghton event format.

The Town Mayor, Cllr Chris Slough opened the event to the audience of over one hundred special guests. Six awards were presented followed by Rock and Roll Bingo before the final two awards were announced. Thank you gifts were also presented to the co-opted members of the Events Working Group at which point Cllr Chris Slough took to the stage for the final time to conclude the evening with a speech.

## The following awards were given out on the evening;



### Individual Award Winner – Lacey Ball

Presented by category sponsors – *Perfect Profiles*

### Individual Award 'Highly Commended' – Tess Stevenson

Presented by category sponsors – *Perfect Profiles*

### Local Group Award Winner - Young Adults With Needs (YAWN)

Presented by category sponsors – *D&I Butchers*

### Local Group Award 'Highly Commended' - Special Needs Out Of School Club (SNOOSC)

Presented by category sponsors – *D&I Butchers*

### Community Facilitator Award Winner - Irene Carpenter

Presented by Rachel Wilson –  
*Houghton Regis Community Church*

### Carer Award Winner – David Coskeran

Presented by category sponsors –  
*Zaky Pasha of Zebra Properties*

### Carer Award 'Highly Commended' – Aileen Palmer

Presented by category sponsors –  
*Zaky Pasha of Zebra Properties*

### Young Person Award Winner – Harry Backhouse

Presented by Cllr Chris Slough –  
*Town Mayor of Houghton Regis*

### Young Person Award 'Highly Commended' – Charlotte Lane

Presented by Cllr Chris Slough –  
*Town Mayor of Houghton Regis*

### Local Hero Award Winner - Sarah Pyatt-Ber

Presented by Rachel Wilson –  
*Houghton Regis Community Church*

### Local Business Award Winner – Creative Decorations

Presented by category sponsors -  
*Katie Chambers & Richard Lovell of Snakes & Ladders*

### Local Business Award 'Highly Commended' – D&I Butchers

Presented by category sponsors -  
*Katie Chambers & Richard Lovell of Snakes & Ladders*

### Lifetime Achievement Award – Bridgett Lanceley

Presented by Cllr Chris Slough –  
*Town Mayor of Houghton Regis*

Town Mayor, Councillor Chris Slough said "We have so much to be proud about in Houghton Regis but everyone knows the real pride of Houghton lies in its people. Our neighbours, helpers, volunteers and those who do their work but go the 'extra mile'. We are very grateful to them all".

*Harry Backhouse, winner of the Young Person Award* also commented "It is an honour to know that Houghton Regis are proud of me".

Sarah Gelsthorp, Civic and Events Officer said "Congratulations to everyone who was nominated for a Pride of Houghton Award and we hope that you all had an enjoyable evening".

Houghton Regis Town Council would like to take the opportunity to thank the following sponsors of the event for all of their support and help in making this year's Pride of Houghton a real success. D&I Butchers, Creative Decorations, Snakes & Ladders, Perfect Profiles, Zebra Properties, TW Carpets and Mecca Bingo.

# Visitor Centre contract awarded for Houghton Hall Park

Central Bedfordshire Council is pleased to announce that the contract for the construction of the Visitor Centre at Houghton Hall Park has been awarded to Modplan Building and Refurbishment Contractors Ltd.

The Visitor Centre, which will be constructed adjacent to the car park off Park Road North, is a key element of the Houghton Hall Park Renaissance and Renewal Project, made possible thanks to National Lottery players (jointly funded by the Heritage Lottery Fund and Big Lottery Fund through the Parks for People programme), Central Bedfordshire Council and Houghton Regis Town Council. It will include a café, heritage area, meeting rooms and toilets as well as an outdoor seating area for park visitors to use and enjoy. The attached sketches provide an artists impression of the building which has been designed to be in keeping with the setting and to provide fantastic views of the park through the floor to ceiling windows on the park aspect.

Construction is planned to commence in November 2016 to enable the visitor centre to open to the public in the summer of 2017. The car park and existing surfaced paths from the car park and from Park Road North will remain open for use during the construction period so that park users are able to continue to access the park over the coming months.

Houghton Hall Park is a publicly accessible urban park located centrally within the town of Houghton Regis. The Park has a rich heritage that is valued by the local community. It plays an important role in the history, culture and landscape of the local area. The Renaissance and Renewal Project, which is a partnership between Central Bedfordshire Council and Houghton Regis Town Council with support from the Heritage Lottery Fund and the Big Lottery Fund, aims to restore the vitality of the park, celebrating local heritage and improving visitor facilities to meet the needs of a growing local community.

Cllr Brian Spurr, Executive Member for Sustainable Communities, Central Bedfordshire Council said "We are very pleased that works are underway on site for the Visitor Centre and further progress can be made on this exciting project to engage the local Houghton Regis community".

Caroline Romans, Houghton Hall Park Project Manager, said: "We continue to be very grateful to the Heritage Lottery Fund, the Big Lottery Fund, Central Bedfordshire Council and Houghton



*Regis Town Council for enabling us to progress on the much anticipated Visitor Centre".*

Houghton Regis Town Council said: "The award of this contract represents another significant milestone in the project and the Town Council is looking forward to seeing work commence". Modplan Commercial Director Colin Slade said "We are very excited to start building this much anticipated Visitor Centre, ensuring we create a facility for the local community to enjoy for years to come. Our hope is this centre will create an area for key engagement projects for the community to use".

Robyn Llewellyn, Head of the Heritage Lottery Fund East of England, said: "Thanks to National Lottery players this wonderful project will celebrate the heritage of Houghton Hall Park, whilst improving facilities for the local community. Given the uncertain future of many parks across the UK, we are delighted to see the progress being made on this important project".

For further information on the Houghton Hall Park Renaissance and Renewal Project please visit [hhp@centralbedfordshire.gov.uk](mailto:hhp@centralbedfordshire.gov.uk)

**For further information please contact:  
James Cunliffe, Communications  
Officer on 0300 300 5301**

**About the Heritage Lottery Fund**  
Thanks to National Lottery players, we invest money to help people across the UK explore, enjoy and protect the heritage they care about - from the archaeology under our feet to the historic parks and buildings we love, from precious memories and collections to rare wildlife. [www.hlf.org.uk](http://www.hlf.org.uk) @heritagelottery @HLFEoE



Central Bedfordshire Council



In partnership with



Supported by



**LOTTERY FUNDED**



## SPOTLIGHT ON BUSINESS

### Business Interview...

## D & I Family Butchers



1. **How long have you been in Houghton Regis for?**

Our family run shop was established in 2007 which means we will be celebrating our 10 year anniversary next year! Very Exciting!

2. **How many do you have working for you?**

We have a big team of 12 in our modest sized shop, these range from Butchers, cashiers, Administrators and Cleaners. Although it's very rare for the shop to have all 12 staff onsite at one time, baring Christmas, we like to offer our team flexible hours to work round our peak times and their all-important quality with their families. We like to think of our team as more than just staff/employees we have all become a close family.

3. **What are your opening hours?**

We are open seven days a week and pride ourselves on being the Butchers Shop you can rely on. Our hours are Monday to Saturday 5am – 5.30pm and Sundays 5am – 4.00pm. As you can imagine working in our shop isn't for the faint hearted and we work such long hours to ensure our meat is hand cut by our skilled butchers and attractively placed in our eye catching window displays in time for people to see on their way to work in the mornings.

4. **What is a typical day like?**

It usually starts with a 4.30am alarm, but as we are local the journey to the shop isn't long. The first thing the team have to do is to start preparations for the window display and ensure orders placed by customers are ready for collection. We make our mince fresh everyday so this is defiantly part of a typical day, cutting up the beef, mincing and putting it pride of place in our window. We make all of our sausages and burgers onsite, using a secret family recipe, so on days when these are being made it can be very hectic in our work room but after nearly 10 years of working together our staff are like a well-oiled machine, that along with our clear procedure and processes in place it helps to make things run smoothly. Throughout the day we serve customers in the shop, along with delivering orders in our refrigerated van to local Restaurants, Schools and Care Homes. We finish the day with a lot of cleaning and paperwork, although our shutters are down at 5.30pm the work usually continues till a lot later...

5. **What is your bestselling product?**

Our bestselling product is definitely our sausages. We make a great variety of sausages which are all made in shop using our all-important secret recipes. We ensure a local and good quality pork is used and try to keep the fat content as low as we possibly can. Over the years we have enhanced our production process using specific techniques which we feel makes our sausages the best around. The flavours we do are our Traditional Pork, Farmhouse Pork, Honey & Mustard, Smokey BBQ, Sundried tomato & Gluten Free.



6. **You won the Local Business Award 'Highly Commended' how did this make you feel?**

We were extremely happy to have been nominated, but to win the 'Highly Commended Award' was brilliant. We are very proud of our Family business and love seeing the same customers returning week in week out buying our meat products, this for us was proof that our shop sells great products at affordable prices, but to physically receive an award to say that our long hours and effort has been noticed made us feel extremely proud. We know the award was won not by a specific person but by the whole team coming together and giving their all every day, so we treated the whole staff with tickets to the event along with an evening of celebrations, letting them know we appreciate all that they do. We like to think of our shop as part of Houghton Regis, bringing the community together, and making Houghton Regis a place you want to live and shop. Our dream would be to make D & I Family Butchers a household name, with a chain of stores, but we would equally be happy to know that our shop in Bedford Square remained there for years to come and can be passed down to our family members.

7. **Have you got any special deals coming up for Christmas?**

**Our Christmas Orders day is on Saturday 26th November**, this is one of the biggest events for our shop were we set up all of the Christmas meat available for purchase and start to take those all-important Christmas meat orders. We always arrange for a children's choir to sing outside our shop, Santa Claus pays a visit to hand out sweets and we have tasters available for anyone who walks through Bedford Square. We have become well known for this grand day and it brings people out in the hundreds! All in all it proves that a modest sized family Butchers shop can give the supermarkets a run for their money, we truly believe that the local people are more interested in supporting local shops who sell great products, and we hope it continues as we can grow to provide more people with our top quality customer service and meat.

# Welcome to our HURRICANES AMATEUR BOXING CLUB

*Manuszka/Ch/Photography (C)*

Everyone can come and try the new experience of boxing (minimum age 8 years old). Everything that you need to bring is: water, trainers, change of clothes and boxing gloves, if possible.

Training days: **Monday 6:15 pm Thursday 7:00 pm**

Address: **Bedford Square Community Centre  
Tithe Farm Road, Houghton Regis, Dunstable, Bedfordshire, LU5 5ES**

More info: **07928363180, 07850368455**  
email: **hurricanes.abc@hotmail.com, facebook.com/hurricanesabc**

Voluntary and Community Action

## Step Into Business Administration

**FREE COURSE**

Discover the job roles, skills and qualities you need for working in this sector

- Office Procedures
- Telephone Skills
- Office Equipment
- Book-keeping




3 & 4 November 2016 - Leighton Buzzard  
8 & 9 November 2016 - Biggleswade  
1 & 2 December 2016 - Houghton Regis

9.15am to 3.15pm. Travel costs met.

**ENROL NOW!**

Tel: 01525 850559 Email: [training@action-centralbeds.org.uk](mailto:training@action-centralbeds.org.uk)






Registered Name: Voluntary and Community Action South Bedfordshire  
Charity Registration No. 1108879 Company limited by guarantee. Registered in England No. 5386570. Registered Office as above.



# Light up a Life this Christmas

The Luton and Dunstable Hospital invites you to join in with their **Light up a Life** campaign this Christmas!

You can buy a *Light* on our Christmas Tree as a gift for someone special or you can dedicate a *Light* in memory of a loved one. All proceeds will benefit the Neonatal Intensive Care Unit Parents' Accommodation; which will provide a home from home for those parents' who want to stay at the hospital overnight so they can be near their baby.



Lights are just £5 each or 3 for £10. If you buy a light as a gift for someone, they will receive a card with your special personal message and if you buy one in memory of a loved one, you will receive a letter of dedication.

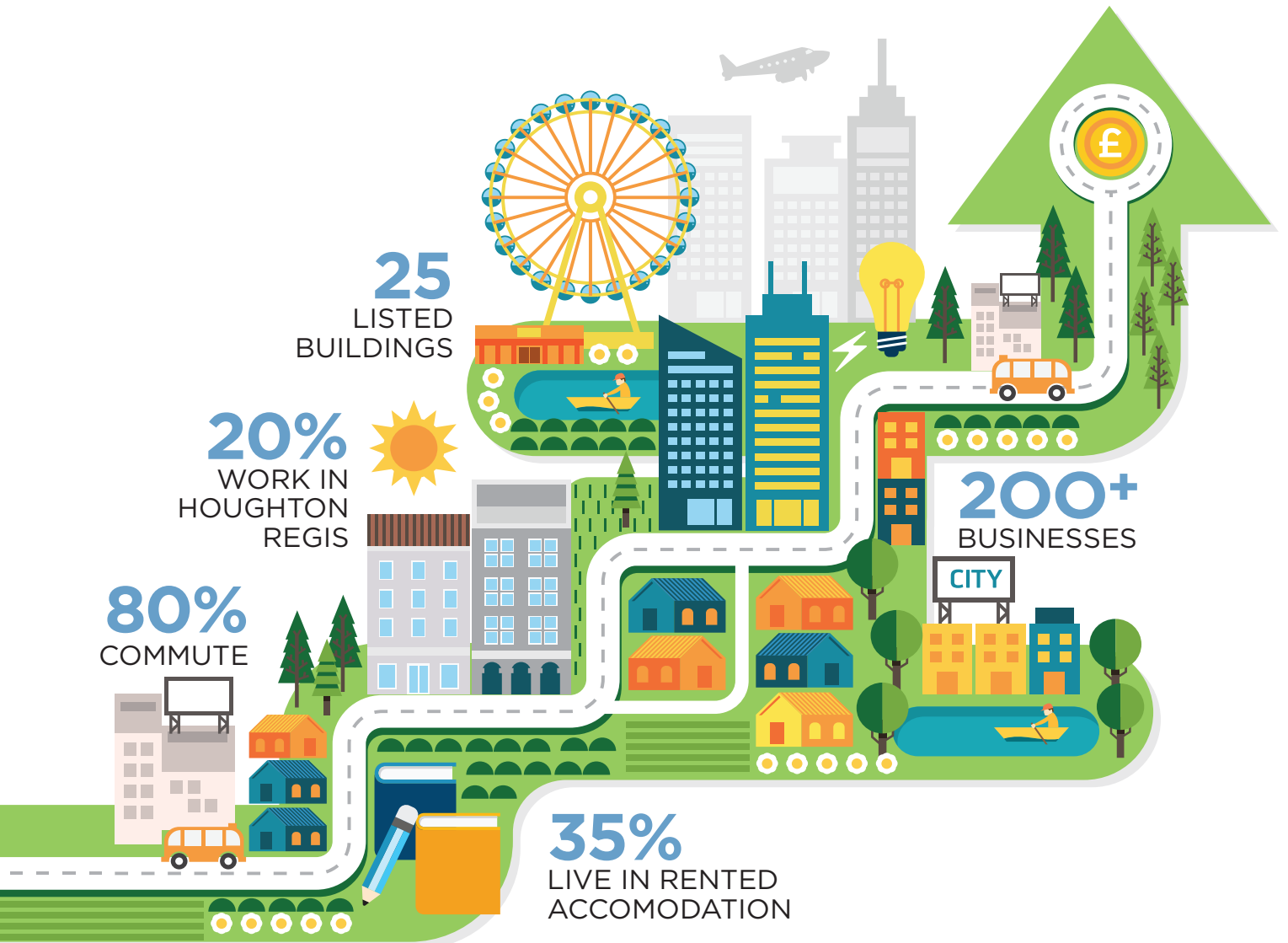
The giant tree will twinkle proudly outside the hospital for everyone to see. Lights can be purchased any time up until Christmas and will be put on the tree, but the switching on ceremony will be on Thursday 1st of December at 6pm at the front of the hospital where there will be festive music provided by the Hadrian Academy school choir, and refreshments in the warm afterwards... everyone is welcome!

To buy your Lights please call the Fundraising Team on **01582 718 289** or visit **[www.ldh.nhs.uk/fundraising](http://www.ldh.nhs.uk/fundraising)** and download a form.



## HOUGHTON REGIS NEIGHBOURHOOD PLAN: ISSUES CONSULTATION

Other versions are available on request from the Town Council



RETURN TO  
HOUGHTON REGIS  
TOWN COUNCIL by  
16<sup>th</sup> JANUARY  
2017

# 12 Questions

to help shape the future of your town

Please take a couple of minutes to let us know your views about the future of Houghton Regis. Your views and those of everyone else, will help shape the Neighbourhood Plan for the area.

**Where you need to choose a number of answers, mark the top choice/most important with 1, second choice with 2, etc. If you would like more information about the Neighbourhood Plan, please give your name, postcode and email address at the end.**

## 1 HOUSING

The new developments permitted in the parish will increase the number of dwellings from 7,000 to nearly 14,000 by 2030. What type of new housing is the most important to build over the next few years?

**Choose two boxes and number 1 and 2**

- flats for single people
- flats/houses for couples
- flats/houses for families
- bungalows for elderly people
- supported or care home accommodation?

## 2 FACILITIES AND LEISURE

As well as the current facilities, for instance the Library at Bedford Square and the Leisure Centre, what other facilities are needed in Houghton Regis - e.g. more training and education, health and exercise, sports facilities, spiritual/religious centres?

---

---

---

---

---

---

---

---

---

---

## 3 Which age group is a priority for facilities?

**Tick one box only**

- young children
- teenagers
- adults
- elderly

## 4 TOWN CENTRE

As the numbers of people living in Houghton Regis grows over the next few years, we think the town centre should grow to meet their needs as well. With the town centre stretching from The Green to Townsend Farm Road, do you think there should be more/ improved?

**Choose five boxes and number 1 - 5**

- food shopping
- convenience stores
- household goods/furniture/electrics
- health facilities
- small shops- e.g. bakers,
- banks/building societies
- services - hairdressers, nail bars
- pubs/clubs
- cafes/restaurants
- takeaways
- entertainment/leisure - e.g. cinema
- hotels
- assembly rooms
- residential uses

## 5 SAFETY & SECURITY

What do you think would make Houghton Regis safer to live in?

**Choose three boxes and number 1 - 3**

- better lighting
- more CCTV
- local police presence
- more speed ramps
- secure cycle parking/storage
- secure young people's accommodation
- women's refuge accommodation
- alternative activities for young people e.g. motorcycle maintenance facility



**6 EMPLOYMENT AND TRAINING**

The town centre, Woodside Estate/Porz Avenue, Houghton Hall Business Park, the businesses on Townsend Farm Road/Portland Close/Westbury Close/Blackburn Rd, as well as the pubs, schools, care and social facilities all provide work and business opportunities in the parish and more employment land is zoned in the HR North plans. What sort of work is needed in the area in future?

**Choose three boxes and number 1 - 3**

- manufacturing
- warehousing
- construction
- office
- light industry
- technology
- music and media
- other

**7 TRANSPORT**

Busway links Houghton Regis with Dunstable and Luton town centres, and Luton railway station and airport. A new road will link the A5 and M1. What are the transport priorities for the future?

**Choose three boxes and number 1 - 3**

- cycle routes to link Houghton, Dunstable and Luton
- improved walking and footpaths
- better local roads
- low carbon cars and buses
- links between the new areas and existing parts of Houghton Regis
- measures to reduce commuting
- areas which need more parking
- others

**8 OPEN SPACE**

Areas such as The Green, All Saints churchyard and local parks and play areas will be protected and maintained. But other open spaces could change, what would be your suggestions

- for the future of The Quarry
- best location for new Multi Use Games Areas
- best locations for toddlers play areas
- improvements to Dog Kennel Down

**Write suggestions in spaces provided**

---

---

---

---

---

---

---

---

---

---

---

---

---

---

---

---

---

---

---

---

---

---

---

---

**9 HERITAGE**

How important is it to protect the heritage in the parish - Maiden Bower, Thorn Spring, Houghton Hall, and listed buildings like The Crown.

**Tick one box only**

- very important
- important
- neutral
- not important
- no importance at all

**10 SUSTAINABILITY**

Nationally, for the first time, in 2016 more electricity has been generated from solar panels and wind turbines than coal-fired power stations. How important is it to encourage the following in the parish

**Tick one box for each**

**solar panels**

- very important
- important
- neutral
- not important
- no importance at all

**bio fuels**

- very important
- important
- neutral
- not important
- no importance at all

**wind turbines**

- very important
- important
- neutral
- not important
- no importance at all

**other power sources such as waste processing**

- very important
- important
- neutral
- not important
- no importance at all

**electric car charging points**

- very important
- important
- neutral
- not important
- no importance at all

**car sharing / bike hire schemes**

- very important
- important
- neutral
- not important
- no importance at all

**11 DEVELOPMENT IN ADJOINING AREAS**

It's likely that land north of Luton will come under the spotlight for future development. How important is it to protect the green spaces around the edge of Houghton Regis and beyond HRN 1 and 2?

**Tick one box**

- very important
- important
- neutral
- not important
- no importance at all

**12** Are there any other issues which you feel are important in the future of Houghton Regis?

---

---

---

---

---

---

---

---

---

---

---

---

---

---

---

---

---

Thank you for taking time to complete this survey. **Please make sure your response is returned to Houghton Regis Town Council by 16<sup>th</sup> January 2017.**

The results from this survey will be posted on the Houghton Regis Town Council website at [www.houghtonregis.org.uk](http://www.houghtonregis.org.uk)

**It would help if you provided your:**

name \_\_\_\_\_

postcode \_\_\_\_\_

email address \_\_\_\_\_

YOUR RESPONSES WILL BE KEPT CONFIDENTIAL AND YOUR DETAILS WILL NOT BE PASSED TO ANY THIRD PARTY.

**PLEASE TICK IF YOU WOULD LIKE TO BE INVOLVED IN THE NEIGHBOURHOOD PLAN**

# Houghton Rocks Music Festival 2016

Rain showers failed to dampen spirits at the Houghton Regis first ever live music event 'Houghton Rocks' on Saturday 10<sup>th</sup> September in fact, the event attracted around over 200 residents and visitors.

The official opening speech by the Town Mayor, Councillor Chris Slough took place at 12.15pm, "thanking the public for turning out despite the horrid weather!"

The bands refused to be beaten by the elements and between them all played over six hours of live music. The exciting line up consisted of *Tess and The Durbervilles*, *The BuzzStables*, *Ribeye*, *The Underdogs*, *The Flying Ants (Beatles Tribute)*, *Supersonic* and *Big in Brazil*. Two beer tents provided by *The Kings Arms* and *Streets Ahead Catering* acted as the rain shelters during the isolated down pours, offering the public a vast selection of beers, ciders and spirits.

The music event was hosted by *DJ Big Man Craig*.

Clare Evans, Town Clerk of Houghton Regis Town Council said "We are delighted that so many people came along and supported this first music event 'Houghton Rocks'. Everyone seemed to be enjoying the event and the rain didn't seem to dampen spirits."

Alongside the music there were a few children's fun rides and activities and various food stalls, and drinks stalls, including some rather jazzy Mocktails!

The event was sponsored by *Zebra Properties*.



## Spotlight on the Community



### 1. What is Travel Choices? And what do you do?

Travel Choices is a Central Bedfordshire Council project aiming to encourage people to make smarter, sustainable Travel Choices. Sustrans are employed to make this happen.

At the Travel Choices Hub in Dunstable we are working to improve access to employment, places of learning and training by sustainable modes of transport. This involves offering bus timetables, giving people the opportunity to have their bike maintained and helping people to plan routes.

We engage with both the community and local businesses. This can be anything from setting up a stall in a supermarket's canteen, offering employees travel information to running weekly Health Walks.

Currently we are running a free Cycle Reward Scheme. A participant makes a pledge to cycle to work or college as often as they can and then keeps us updated on their journey by sending in photos. In return, they collect a reward after three weeks (bike lights, tool kits, hand pumps, bike baskets, and front panniers) and go into a prize draw for £200 worth of Dyson's bike vouchers.

### 2. What special events for the community have you got coming up?

People can drop in any day for free bike security marking. There is a **free Dr Bike** coming up on **Saturday 5th November** - call us on 01582 813018 to book a place and bring your bike along. Check our Facebook page for more upcoming Dr Bikes.

We will be out and about around **Dunstable on the 29th, 30th November and 1st December** with the **Road Safety Team**, giving out bike lights to cyclists.

On **Saturday 3rd December** we have the **Santa Ride on the Busway** in partnership with Keech Hospice. Starting in Grove House Gardens at 10am, this is a family cycle ride suitable for all ages, where participants can dress up as Santa!

### 3. What are the organisation's plans for future growth or change?

The long term aspirations of Sustrans are to see people travelling sustainably to get around. This could be walking the kids to school, cycling to the shops to buy milk or catching a train to get to work.

In Dunstable and Houghton Regis, Travel Choices would like to see less congested roads and fewer car journeys to create a healthier environment and a positive effect on the population's wellbeing. People should have the ability to travel around the local area without needing a car.

### 4. Where can young people find out more from?

Check out our Facebook page [www.facebook.com/TravelChoices](http://www.facebook.com/TravelChoices) for details on upcoming events, competitions and travel information.

The Travel Choices Hub (1 Ashton Square, Dunstable. LU6 3SN) is open Tuesday to Friday 10-4pm and Saturday 10-3pm. We have loads of information about local walks, public transport, timetables and cycle routes. Drop in and have a browse.

# Strategic Updates

## HRN1

There is no news to report in relation to HRN1.

## Bidwell West/Houghton Regis North 2 Update

The technical assessments associated with discharging the conditions attaching to the planning permission granted in late 2015 are now all but complete with the exception of the highway approvals which are expected shortly.

The first phase residential parcels are currently being marketed and it is anticipated that reserved matters applications will follow in early 2017. Once the detailed consent is forthcoming construction works can commence.

Cllr Laura Ellaway attended the visit and commented, 'Cllrs were shown a master plan outlining the first 4 areas to be built in HRN2. These first homes will only be ready after the New A5/M1 link road is opened so that traffic flow is diverted away from Houghton Regis Town Centre.'

## Kingsland's Site

At Central Bedfordshire Council we're all about transforming communities, enhancing life chances and making places the very best they can be. And for some areas this is more of a challenge, but one we're willing to tackle.

You may have heard that we are currently working on a regeneration project with former England football captain Rio Ferdinand and his former West Ham United team-mates Mark Noble and Bobby Zamora and their company Legacy, which we hope will regenerate the Kingsland area of Houghton Regis.

What we're aiming to achieve is a truly innovative community-centred scheme that will change our residents' lives, especially young people.

With the footballers at the forefront, as advocates of social change, this is about

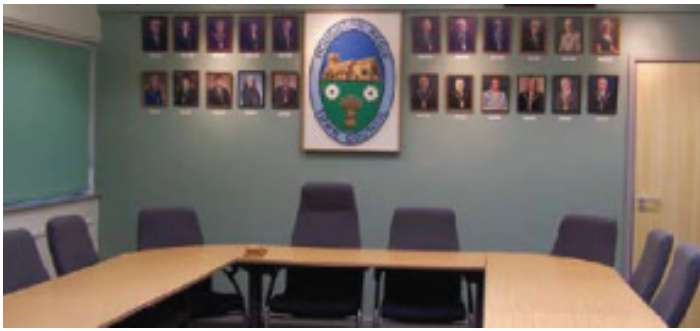
good quality education, community facilities and homes with sport as the hook to support the regeneration, build stronger communities and raise aspirations.

We are only focused on doing the best for the people of Houghton Regis. This is the first scheme of its kind, so we are in the very early stages of some exciting negotiations with a lot of new and complex ground to cover just to determine whether it will work for the benefit of the community. We will only go ahead with the project if this is the case.

I say this because I know there was trepidation from some areas of the community after a recent article in the national press quoted some large and misleading housing figures and used some artist's impressions both of which were representative of potential Legacy regeneration schemes in London.

No decisions have yet been made about Kingsland, but we are acutely aware that the needs of Houghton Regis are completely different to the capital. High-rise flats won't do for us or the community. We're only interested in a mix of high-quality affordable, social, rented and privately owned homes, but there are many developers that can deliver that. The real work lies in Rio, Mark and Bobby helping us deliver a lasting, positive transformation to the Houghton Regis community. A legacy, plain and simple.





## Town Council Calendar of Meetings

Please find below the calendar of meetings for the Town Council from January to the end of March 2017. All council meetings are open to the public and are held in the Council Offices on Peel Street at 7.30pm unless otherwise stated. The agendas for forthcoming meeting can be found on the notice board outside the offices and on the Town Council website. Copies can also be obtained from the office.

Date	Day	Committee	Time
3 <sup>rd</sup> January	Monday	Accounts Sub Committee Planning & Licensing Committee	6.15pm
9 <sup>th</sup> January	Monday	Community Services	
16 <sup>th</sup> January	Monday	Environment & Leisure	
23 <sup>rd</sup> January	Monday	Corporate Services	
24 <sup>th</sup> January	Tuesday	Accounts Sub Committee Planning & Licensing Committee	6.15pm
30 <sup>th</sup> January	Monday	Town Council	
6 <sup>th</sup> February	Monday	Town Partnership	
13 <sup>th</sup> February	Monday	Accounts Sub Committee Planning & Licensing Committee	6.15pm
6 <sup>th</sup> March	Monday	Community Services	
7 <sup>th</sup> March	Tuesday	Accounts Sub Committee Planning & Licensing Committee	6.15pm
13 <sup>th</sup> March	Monday	Environment & Leisure	
20 <sup>th</sup> March	Monday	Corporate Services	
27 <sup>th</sup> March	Monday	Town Council	
28 <sup>th</sup> March	Tuesday	Accounts Sub Committee Planning & Licensing Committee	6.15pm



Want to have fun and make new friends?  
Then come and join us!  
Thornhill & Friends Majorettes  
Thornhill Primary School, Grove Road, Houghton Regis  
Saturday 10.00 – 11.45 a.m.  
Wednesday 6.30 – 8.00 p.m.  
£2 per session (1 child) plus £1 per session per sibling (2+ children)  
First session free!  
Boys and Girls (Aged 4+) Welcome  
Come along on Saturday or Wednesday or call  
Debbie on 07523043177



I am happy to report that I was the successful candidate in the recent local election held in the Houghton Hall Ward. I would like to take this opportunity to thank everyone who voted for

me and all those who kindly supported me, to enable me to be successful.

I have lived in Houghton Regis for the past 7 years and I am happily married with 3 children. I am myself disabled, so would like to think I understand peoples issues surrounding health and disability needs.

My focus during my term will be :-

- To support vulnerable members of society and ensuring equality and diversity as well as inclusion.
- To assist with issues surrounding anti-social behaviour to ensure people feel safe in the local area.
- To work with the Town Council to ensure the youth and sporting facilities in the area are fit for purpose.

Finally, as I start on my journey as a new Councillor with lots of things to learn, I shall endeavour to become an asset to the Town Council and to local residents.

**Cllr Tim Welch**

## Woodside Link Cycling Celebration

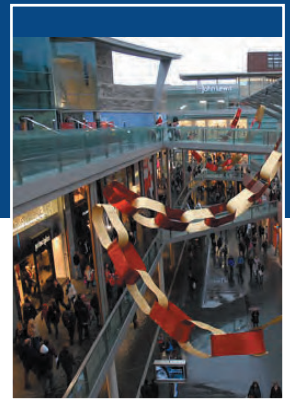
A family fun day takes place on the new Woodside Link road on Saturday 10<sup>th</sup> December between 10am and 2pm. There will be cycling races for youngsters, and an opportunity for people of all ages to leisurely cycle up and down the new road. Live music from local band The Situators and displays from the Extreme Mountain Bike Show are also planned. Exhibitions will provide more information on Central Bedfordshire Council's future plans for the area.

Full details of the event are available at [www.centralbedfordshire.gov.uk/woodsidelink](http://www.centralbedfordshire.gov.uk/woodsidelink)



If you are aged 65 or over, you can register for the Mayor's Christmas Card.

Please contact Sarah Gelsthorp on 01582 708523 to ensure that you are on the list.



## WINTER CRIME

The darker winter nights, and particularly the period leading up to and over Christmas, present their own problems when it comes to crime.

### Shopping safely and sensibly

- Be aware of your belongings when you're in a crowd - there may be pickpockets around.
- Put your purse or wallet away before leaving the till - don't let staff or other customers rush you.
- Take care at the ATM - be wary of people standing too close for comfort – try and use an ATM inside the bank.
- If you shop online, check out the site's payment methods and the security they offer - many sites can take orders over the phone if you don't want your details floating around in the ether.

### Using the car . . .

- Park in a busy and well-lit area.
- Leave personal and valuable items at home.
- If you must have them in the car, store them in the boot before you leave.
- Don't store your bought goods in the car and then return to the shops for more - you don't know who may be watching in the car park.
- Late night shopping may be more convenient, but do take care and take someone with you if possible.

### Time for a security health check

- Check outdoor security lights and replace blown bulbs.
- Check padlocks, hasps and hinges on your outside doors for wear and tear, and replace them.
- Many people have freezers in the garage - Christmas food and alcohol is vulnerable - and don't forget new bicycles are also at risk!
- Has your house alarm been serviced recently?
- If you don't have an alarm, you can always buy a battery operated single room alarm to protect your hallway, shed or garage.

### Protecting your home while you are out

- Use timer switches to operate lights and radios tuned to a talk radio station in the house when you are out.
- Although the tree looks lovely in the window, don't leave the lights on and curtains open when you go out - and don't leave presents under the tree!

- If you go on holiday, ask a neighbour or friend to pick up your post – they can also park their car on your drive
- After Christmas, dispose of boxes and packaging carefully - don't leave them on the roadside or on the top of the wheelie bin.

### Unexpected visitors

- Bogus Callers: pretending to be from a utilities company (water, gas, electricity, phone, even police).
- Distraction Burglars: one will keep you at your door with an excuse (eg, looking for an address or a lost ball/dog) while an accomplice commits the burglary round the back.
- Cold Callers: hard-sell sales reps who turn up without an appointment and won't leave till you have signed a contract.
- Rogue Traders: unqualified workmen offering to do jobs on your home, usually for cash, often badly and very expensively.

### Genuine unexpected visitors

- Utilities staff with ID regarding emergency repairs
- Political groups canvassing for election purposes
- Charity collectors with ID and charity number
- Emergency Services staff on production of warrant card or official identification
- Religious groups and carol singers
- People delivering business flyers
- Whoever it is, before you answer the door, check all back doors and windows are closed - if it's a genuine caller, they won't mind waiting a few extra seconds.
- If you're not sure, don't open the door!

### Property marking – Why do it?

- Acts as a deterrent to thieves as it makes selling on stolen goods very difficult.
- Increases the chances of your property being returned to you.
- Helps the police build a strong case against the offender.
- Many different ways of property marking:  
UV pen: electrical items, bikes, etc  
Etching: power tools and equipment  
Smartwater: can be used on any item  
Use your house number/name and postcode
- Remember to register your valuables on [www.immobilise.com](http://www.immobilise.com)



## HOUGHTON REGIS DAY CENTRE

Parkside Drive

We will be holding our

**CHRISTMAS BAZAAR**

On

**SATURDAY 3<sup>rd</sup> December 2016**

**12.00pm - 2.00pm**

**Admission 50p**



# Christmas Carol Service

All Saints Church, Houghton Regis

SATURDAY 3<sup>rd</sup> DECEMBER 2016

**5pm**

**Plus** Christmas Light Switch On



Followed by  
Light seasonal refreshments



All are welcome to attend the Town Mayor's Carol Service



**FREE  
ENTRY**

## Santa's Grotto



Santa and his Elves will once again be stopping off  
in Houghton Regis Library  
this year on Saturday 10<sup>th</sup> December 2016  
9am - 12:00pm

**a SURPRISE present for every child!**

Sponsored by Houghton Regis Town Council 

The time has come to start getting in  
pancake race training and join in our

# houghton regis pancake race 2017

The Town Council is holding its 4th  
Pancake race on the Village Green on  
**Tuesday 28<sup>th</sup> February 2017**  
**This event is FREE!**

All teams (of up to four people) will need to  
compete in a short obstacle course.

Whether you are a school,  
community group, or business,  
sign up and join in the fun!

Forms will be available from early  
December from the council offices,  
or call 01582 708540 for more information!

All spectators welcome